

FRETER

F R E T E R K R A N




Turmdrehkran Liebherr 22HM

Technische Daten

Ausladung	25,0 / 27,0m
Traglast an der Spitze	800 / 700kg
Max. Tragfähigkeit	2.000kg
Hakenhöhe	19,0m
Hakenhöhe 20°-Steilstellung	26,2m
Hakenhöhe 40°-Steilstellung	33,4m
Drehkreisradius	2,4m
Transportlänge	13,95m
Transportbreite	2,5m
Transporthöhe	3,6m(3,1m)

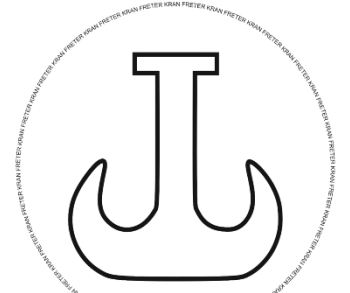
Ausladung und Tragfähigkeit

m	 m / kg 2000	m/kg																	
		10,0	11,0	12,0	13,0	14,0	15,0	16,0	17,0	18,0	19,0	20,0	21,0	22,0	23,0	24,0	25,0	26,0	27,0
27,0	3,0 – 12,0 2000	2000	2000	2000	1790	1630	1490	1370	1270	1180	1100	1030	970	910	860	820	770	740	700
25,0	3,0 – 12,2 2000	2000	2000	2000	1850	1680	1540	1420	1310	1220	1140	1060	1000	940	890	840	800		
13,5	3,0 – 13,5 2000	2000																	

Bei Fragen stehen wir Ihnen gerne zur Verfügung

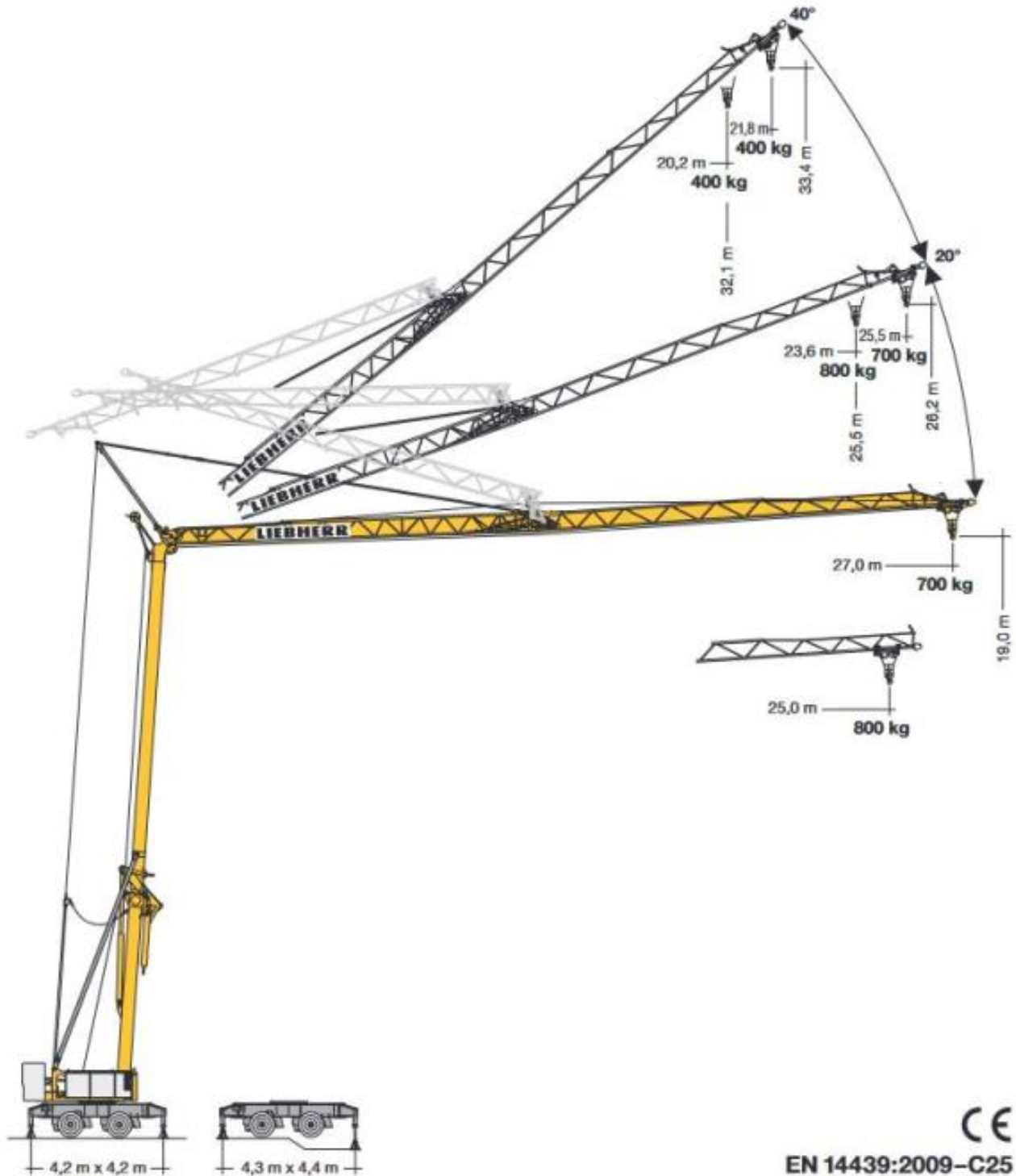
info@freter.de

+49 (0) 7754 404

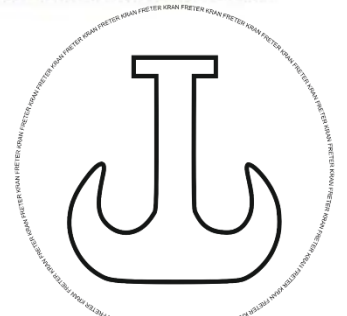


FR_{TER}

F R E T E R K R A N

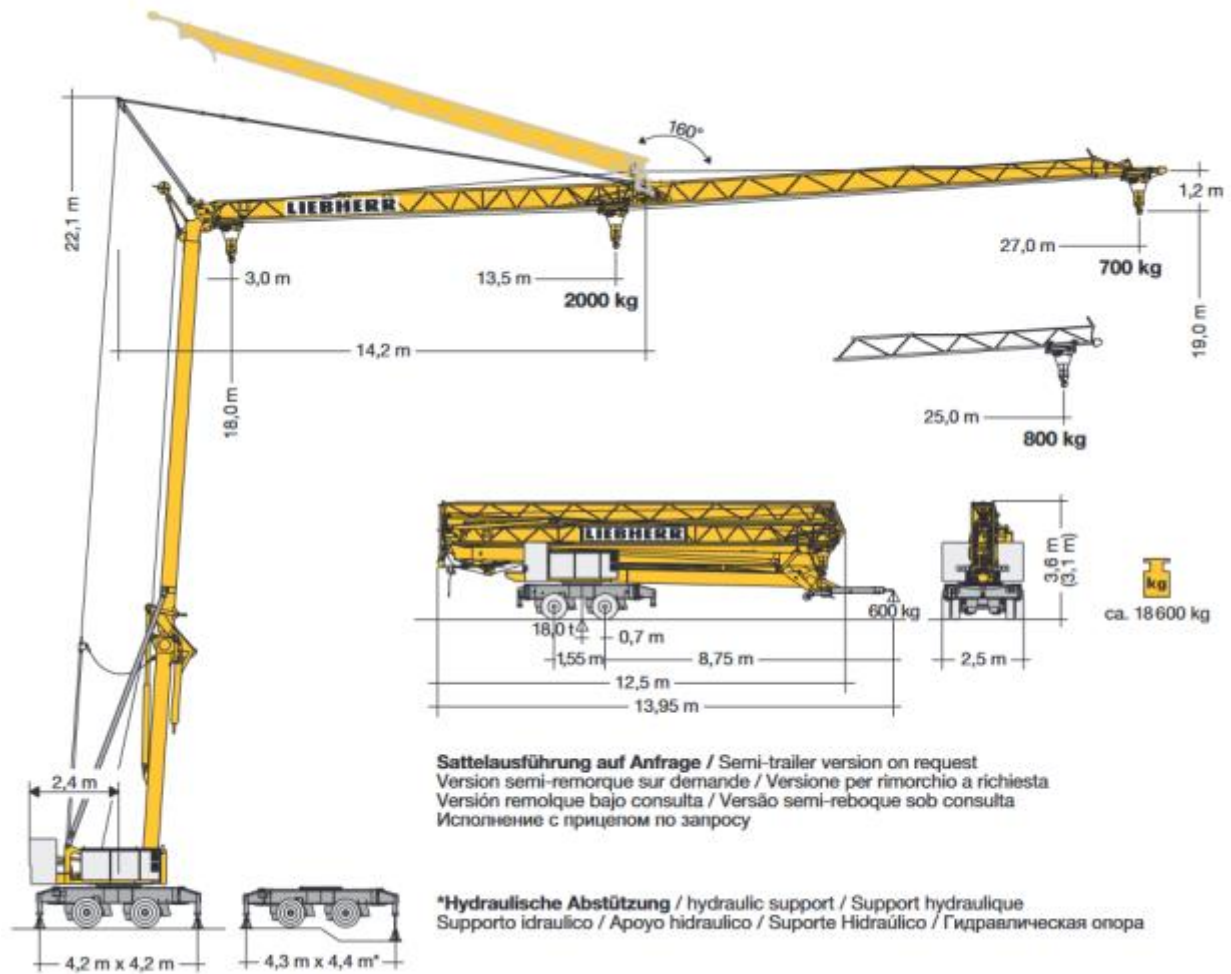


CE
EN 14439:2009-C25



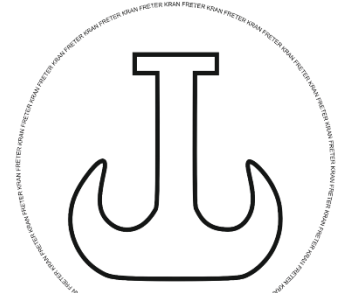
FRETER

F R F T F R K R A N



Gewicht

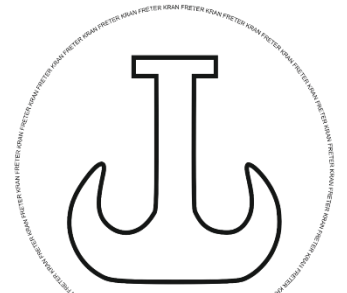
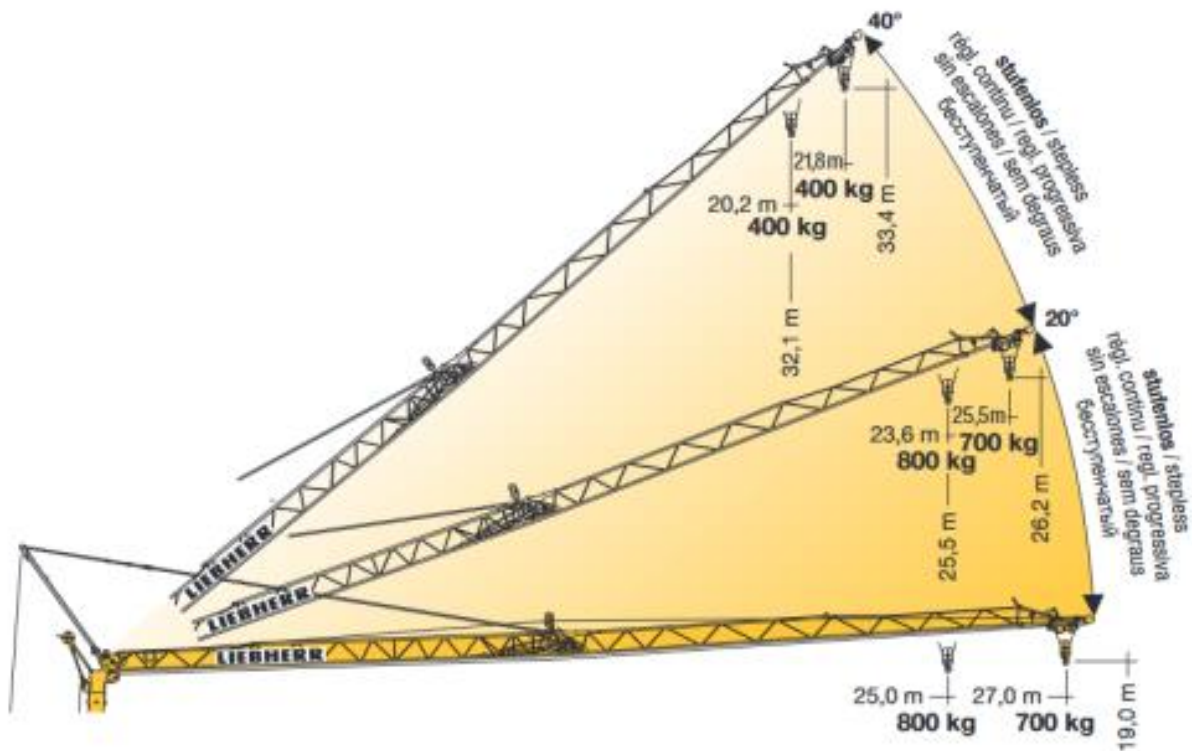
	7600 kg	r = 2,4 m		11000 kg
---	---------	-----------	---	----------



Auslegerbereitstellung

m		5°	10°	15°	20°	25°	30°	35°	40°
27,0	m l	20,2	22,4	24,5	26,2	28,5	30,4	32,2	33,4
	m	3,0- 11,9-26,9	3,0- 14,7-26,6	3,0- 19,2-26,2	3,0- 23,2-25,5	3,0-24,7	3,0-23,7	3,0-22,5	3,0-21,8
	kg	-2000- 700	-1500- 700	-1050- 700	800- 700	630	520	440	400








m		5°	10°	15°	20°	25°	30°	35°	40°
25,0	m l	20,0	21,9	23,9	25,5	27,6	29,4	31,0	32,1
	m	3,0- 12,2-24,9	3,0- 15,1-24,7	3,0- 19,6-24,2	3,0-23,6	3,0-22,9	3,0-22,0	3,0-20,9	3,0-20,2
	kg	-2000- 800	-1500- 800	-1050- 800	800	630	520	440	400



FRETER

F R E T E R K R A N

Antriebe

	U/min 0 ↔ 0,8 sl./min tr./min	1,5 kW FU				
	18,0 / 36,0 m/min	1,1 / 1,8 kW	7,5 kW FU 	Stufe / Step / Cran / Marcia Velocidad / Velocidade Передача kg m/min		
	ca. 160°/min	4,0 kW		1	2000	4,0
				2	2000	20,0
				3	1300	30,0
			4	1000	40,0	
BGL  C.0.05.0020			 400 V	50 Hz	13,0 kVA	

Aufstellvorgang

