

# FRETER

F R E T E R K R A N



## Turmdrehkran Liebherr 53 K

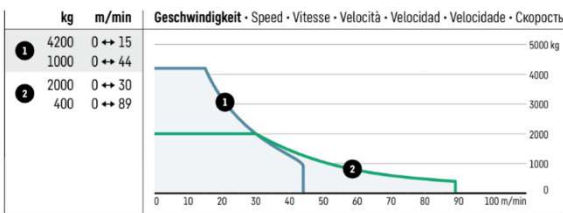
### Technische Daten

Ausladung	28,0 / 40,0m
Traglast an der Spitze	2000/1100kg
Max. Tragfähigkeit	4200 kg
Hakenhöhe	40,0 m
Hakenhöhe 20°-Steilstellung	43,1 m
Hakenhöhe 40°-Steilstellung	50,3 m
Transportlänge	15,62 m
Transportbreite	2,5 m
Transporthöhe	3,85 m

### Antriebe

11 kW FU

↔  
 stufenlos · stepless  
 régl. continu · regl. progressiva  
 sin escalones · sem degraus  
 бесступенчатый



BGL

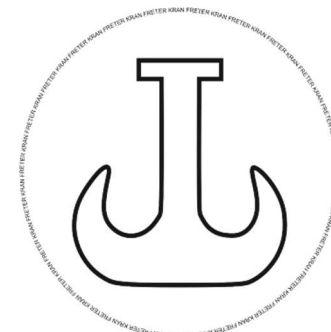
C.O.03.0050  
 C.O.03.0050

0 ↔ 0,9 U/min · sL./min · tr./min 3,0 kW FU	0 ↔ 51 m/min 2,2 kW FU <sup>II</sup>	0 ↔ 25 m/min 2 x 2,2 kW FU	0 - 45°, 95 sec. 2,0 kW	380 - 440 V	50 - 60 Hz	16,0 kVA (FU)
--	---	-------------------------------	----------------------------	-------------	------------	---------------

Bei Fragen stehen wir Ihnen gerne zur Verfügung

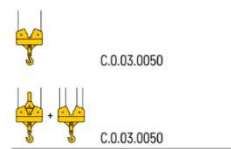
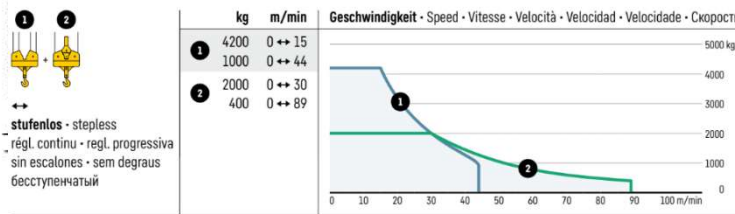
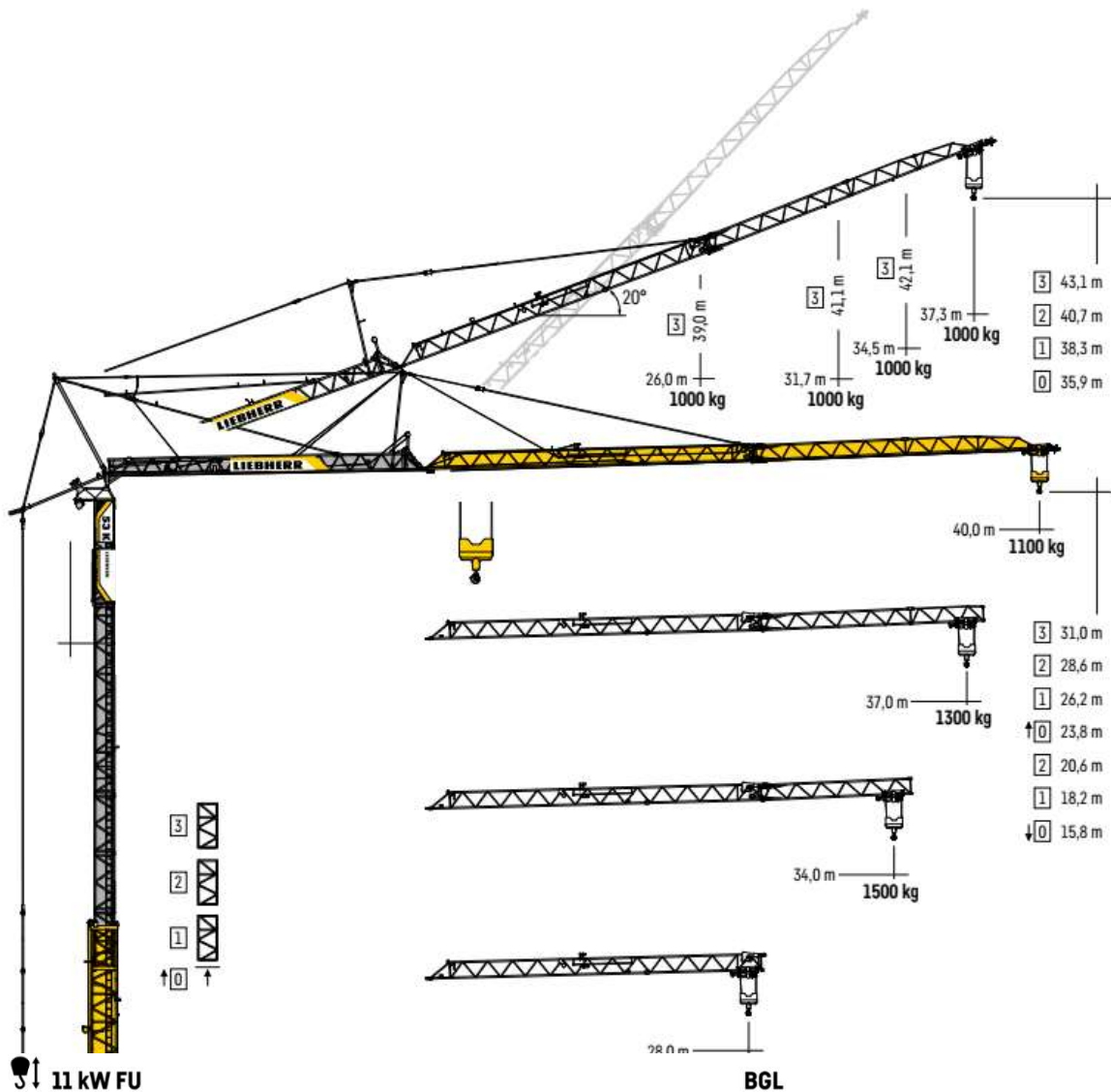
info@freter.de

+49 (0) 7754 404



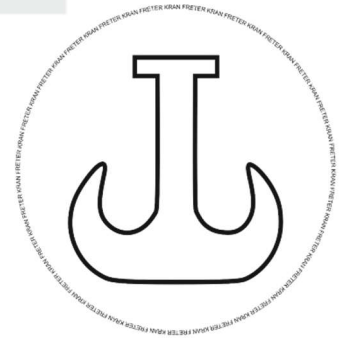
# FRETER

## F R E T E R K R A N



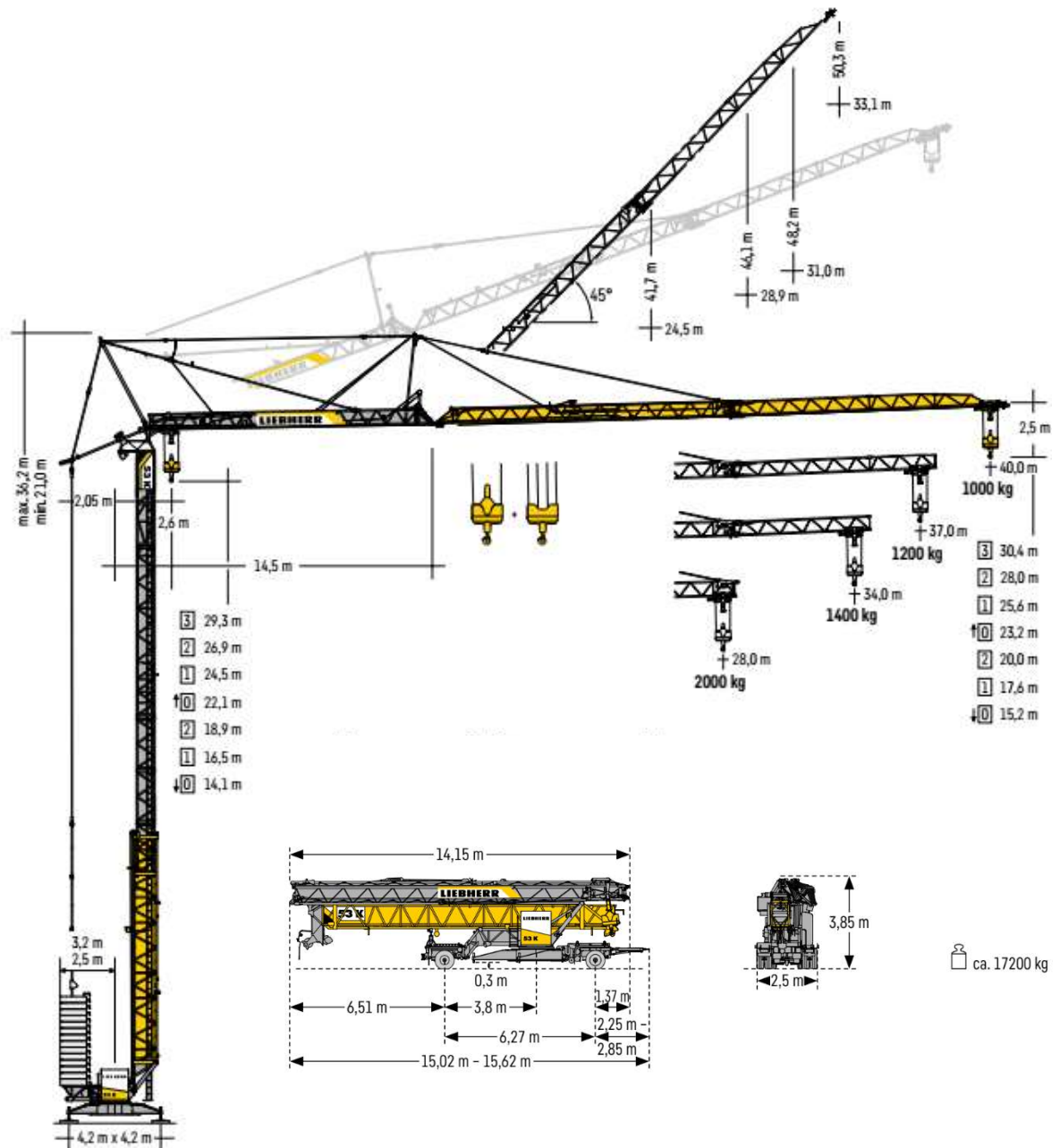
### Gewichte

0 ↔ 0,9 U/min • sl./min • tr./min 3,0 kW FU	0 ↔ 51 m/min 2,2 kW FU <sup>II</sup>	0 ↔ 52 m/min 3,0 kW FU <sup>II</sup>	0 ↔ 25 m/min 2 x 2,2 kW FU	0 - 45°, 95 sec. 2,0 kW	380 - 440 V	50 - 60 Hz 16,0 kVA (FU)
r = 3,20 m r = 2,50 m	24000 kg <sup>II</sup> 28000 kg <sup>II</sup>					13300 kg



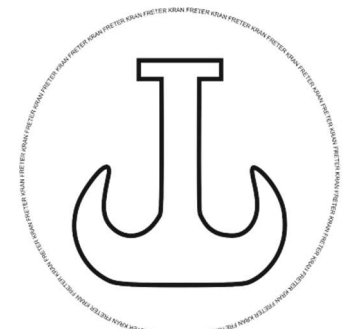
# FRETER

F R E T E R K R A N



## Ausladung und Tragfähigkeit

Auslegerstellung 0°



# FRETER

## F R E T E R K R A N

		m																					
m	m	kg	14,0	16,0	18,0	20,0	22,0	24,0	26,0	28,0	29,0	30,0	31,0	32,0	33,0	34,0	35,0	36,0	37,0	38,0	39,0	40,0	
40,0	2,6 - 24,4	2000	2000						1850	1700	1630	1560	1500	1450	1390	1340	1300	1250	1210	1170	1140	1100	
37,0	2,6 - 25,8	2000	2000						1980	1820	1740	1670	1610	1550	1490	1440	1390	1340	1300				
34,0	2,6 - 26,7	2000	2000						1890	1810	1740	1680	1610	1550	1500								
28,0	2,6 - 28,0	2000	2000																				

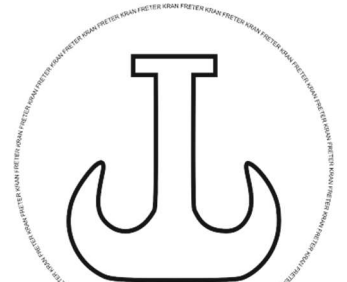
		m																					
m	m	kg	14,0	16,0	18,0	20,0	22,0	24,0	26,0	28,0	29,0	30,0	31,0	32,0	33,0	34,0	35,0	36,0	37,0	38,0	39,0	40,0	
40,0	2,6 - 23,6	2000	2000						1960	1770	1610	1540	1470	1410	1350	1300	1250	1200	1160	1110	1070	1040	1000
37,0	2,6 - 24,9	2000	2000						1900	1730	1650	1580	1520	1450	1400	1340	1290	1250	1200				
34,0	2,6 - 25,7	2000	2000						1970	1800	1720	1650	1580	1520	1460	1400							
28,0	2,6 - 28,0	2000	2000																				

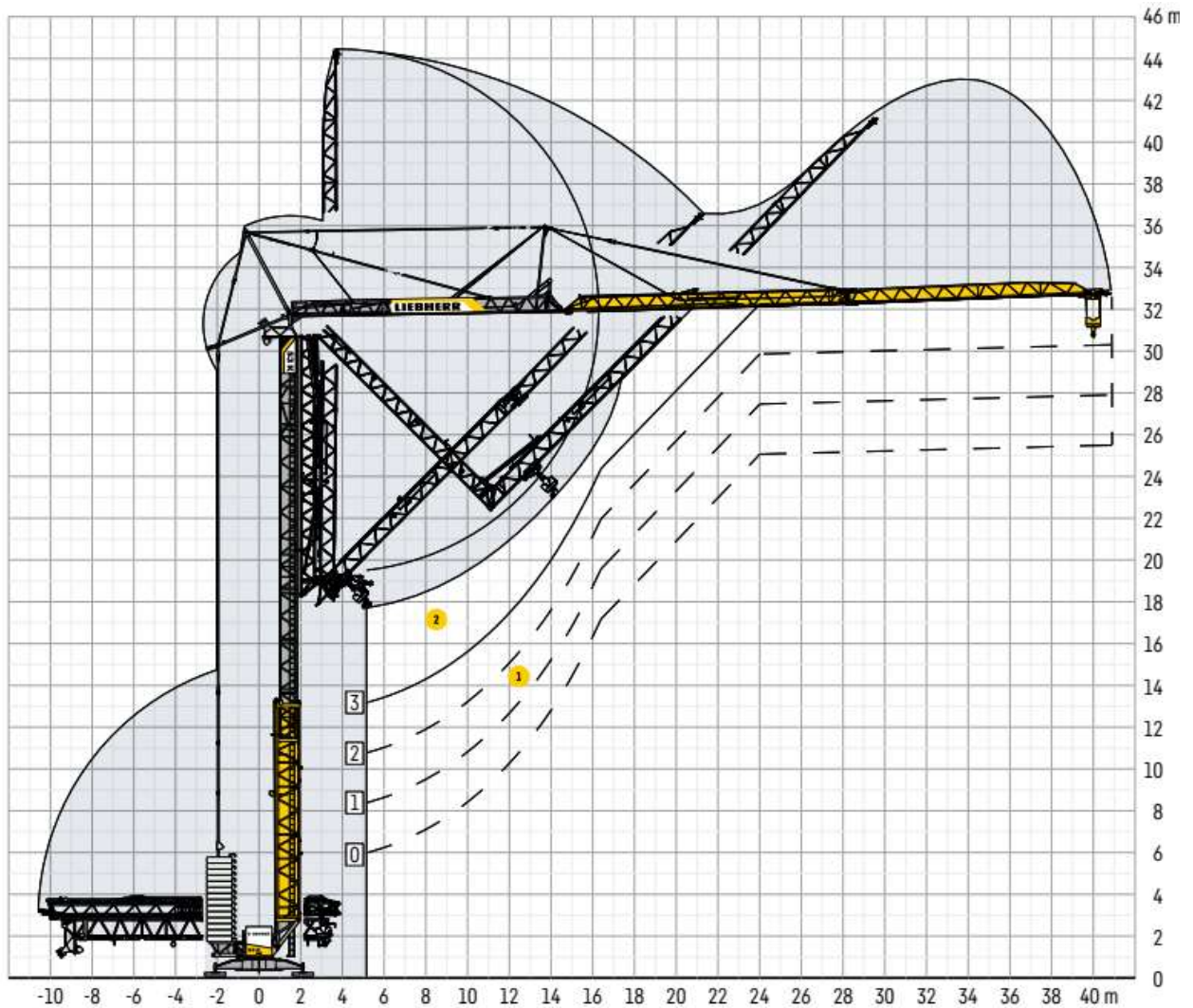
		m																				
m	m	kg	14,0	16,0	18,0	20,0	22,0	24,0	26,0	28,0	29,0	30,0	31,0	32,0	33,0	34,0	35,0	36,0	37,0	38,0	39,0	40,0
40,0	2,6 - 13,1	4200	3850	3270	2830	2480	2200	1970	1780	1620	1550	1480	1420	1360	1300	1250	1200	1160	1120	1080	1040	1000
37,0	2,6 - 13,7	4200	4090	3480	3010	2640	2350	2110	1900	1730	1660	1590	1520	1460	1400	1340	1290	1250	1200			
34,0	2,6 - 14,1	4200	4200	3600	3120	2740	2440	2190	1980	1800	1720	1650	1580	1520	1460	1400						
28,0	2,6 - 15,3	4200	4200	3970	3440	3030	2690	2420	2190	2000												

### Auslegerstellung 20°

		m																				
m	m	kg	14,0	16,0	18,0	20,0	22,0	24,0	26,0	28,0	29,0	30,0	31,0	31,7	32,0	33,0	34,0	34,5	35,0	36,0	37,0	37,3
40,0	2,6 - 37,3	1000	1000																			
37,0	2,6 - 34,5	1000	1000																			
34,0	2,6 - 31,7	1000	1000																			
28,0	2,6 - 26,0	1000	1000																			



## Aufstellvorgang



1 Standard Aufstellkurven von 0 bis 3 Turmstücken

2 Erhöhte Aufstellkurve (+4,5 m) am Beispiel von 3 Turmstücken

